

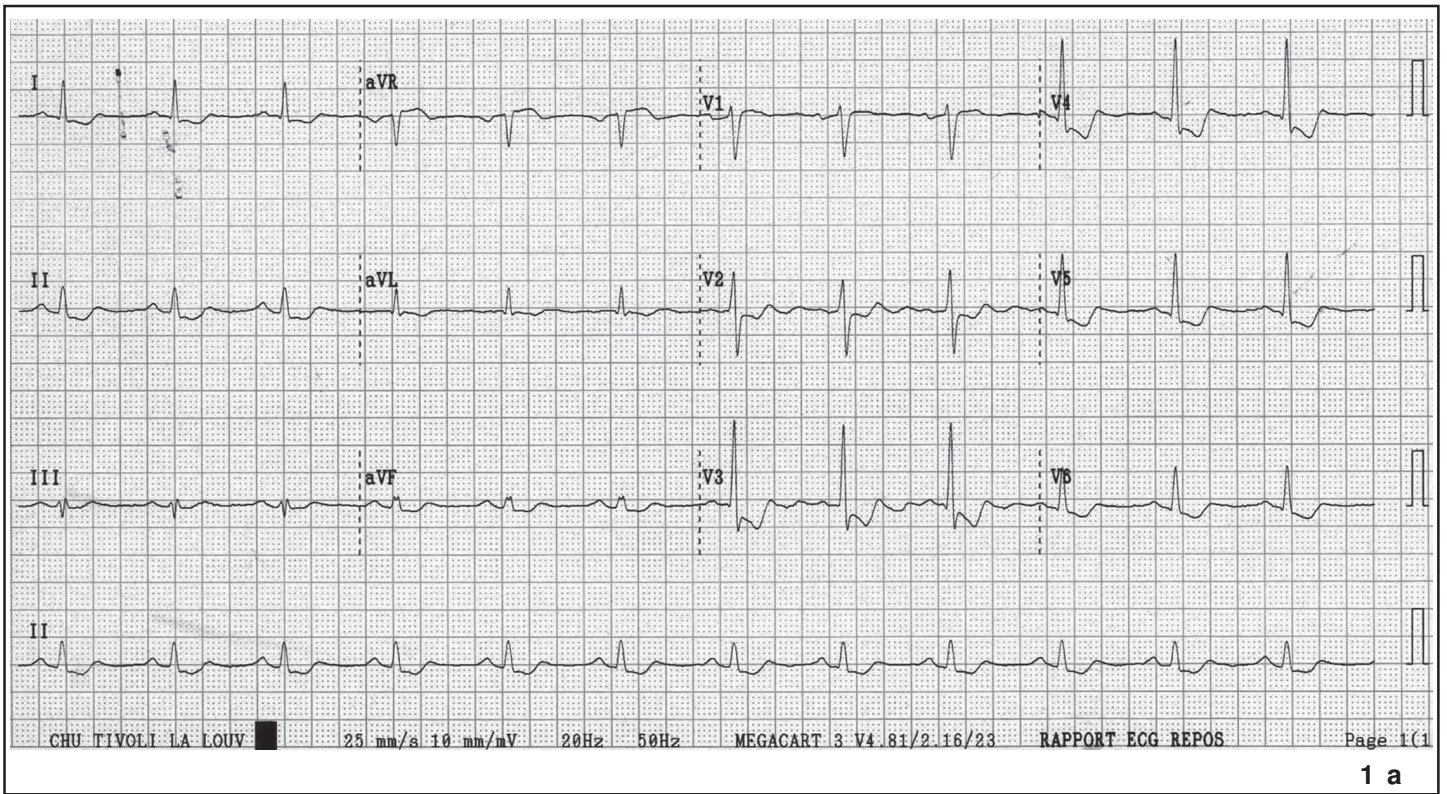
Tracés électrocardiographiques

Electrocardiographic tracings

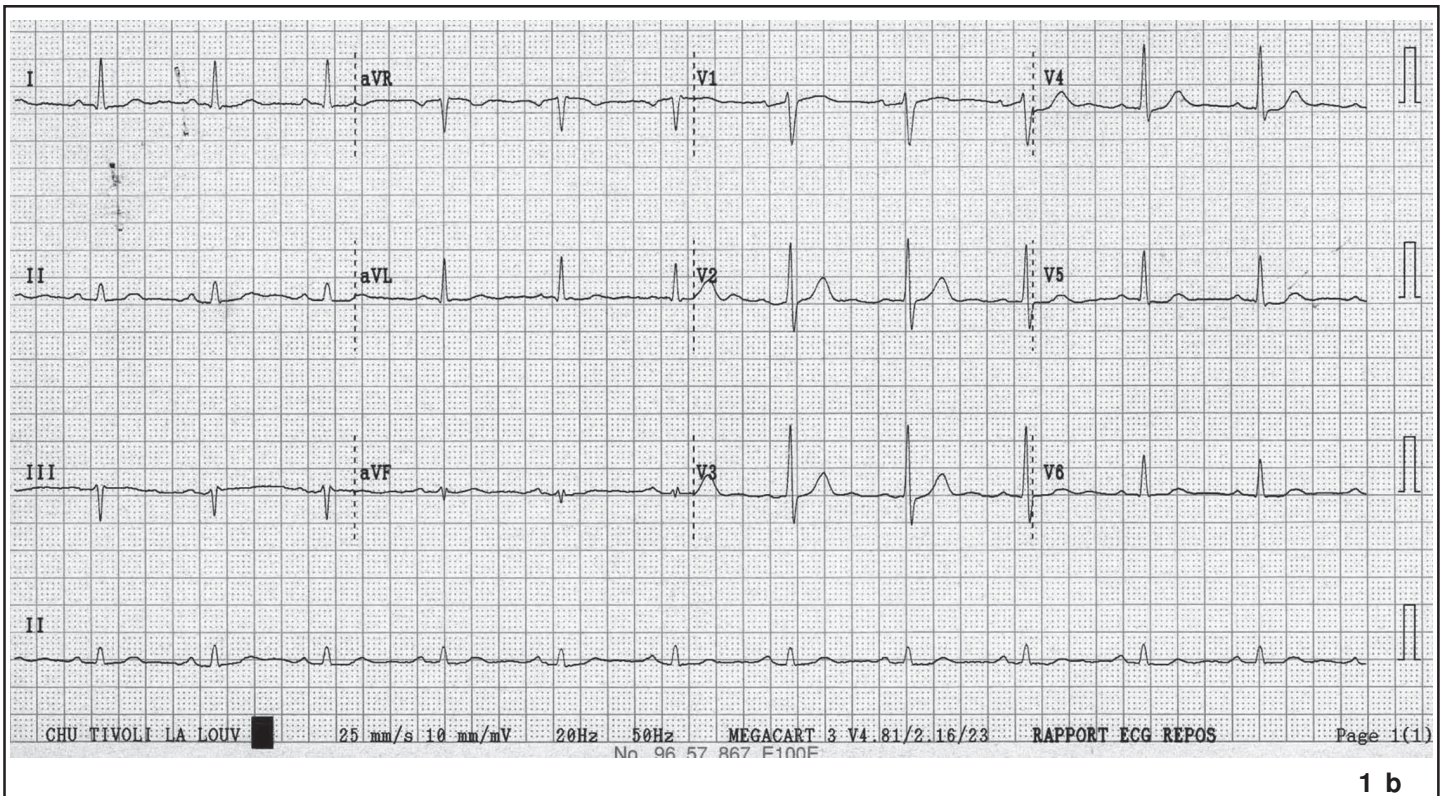
A. Friart

Service de Cardiologie, C.H.U. Tivoli, La Louvière

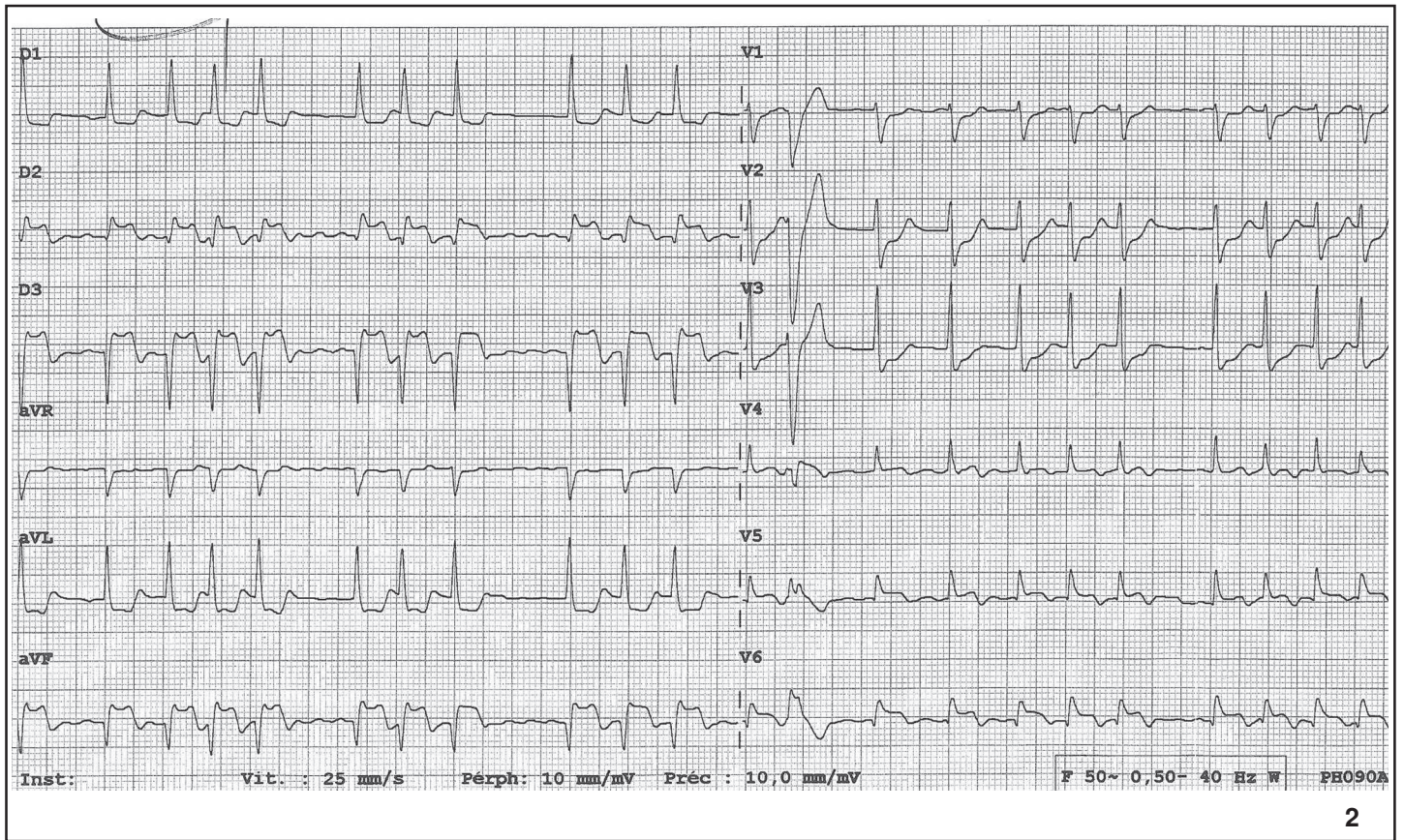
Les interprétations des tracés seront publiées dans la *Revue Médicale de Bruxelles* qui paraîtra fin octobre 2012 (Rev Med Brux 2012 ; volume 33 ; numéro 5).

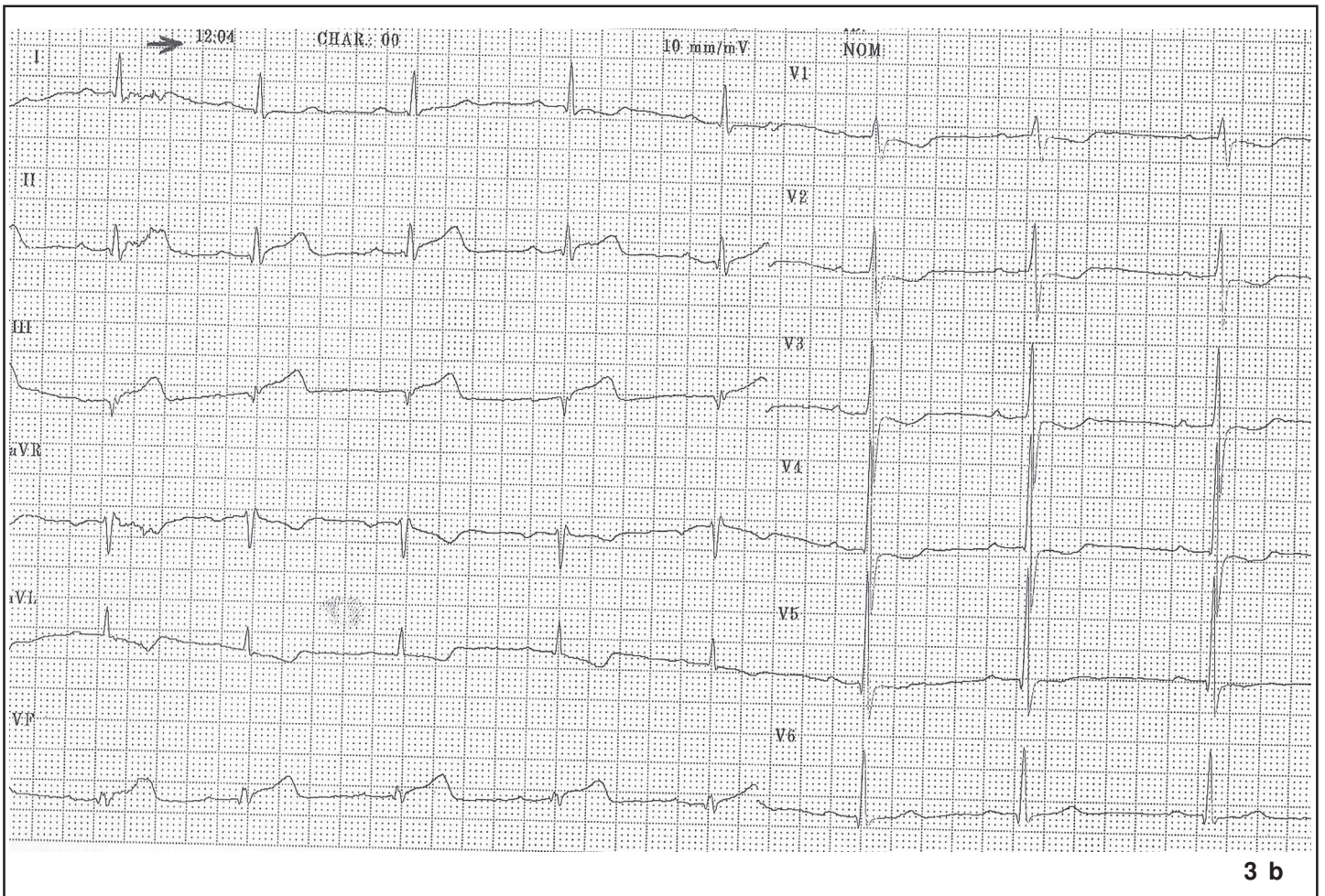
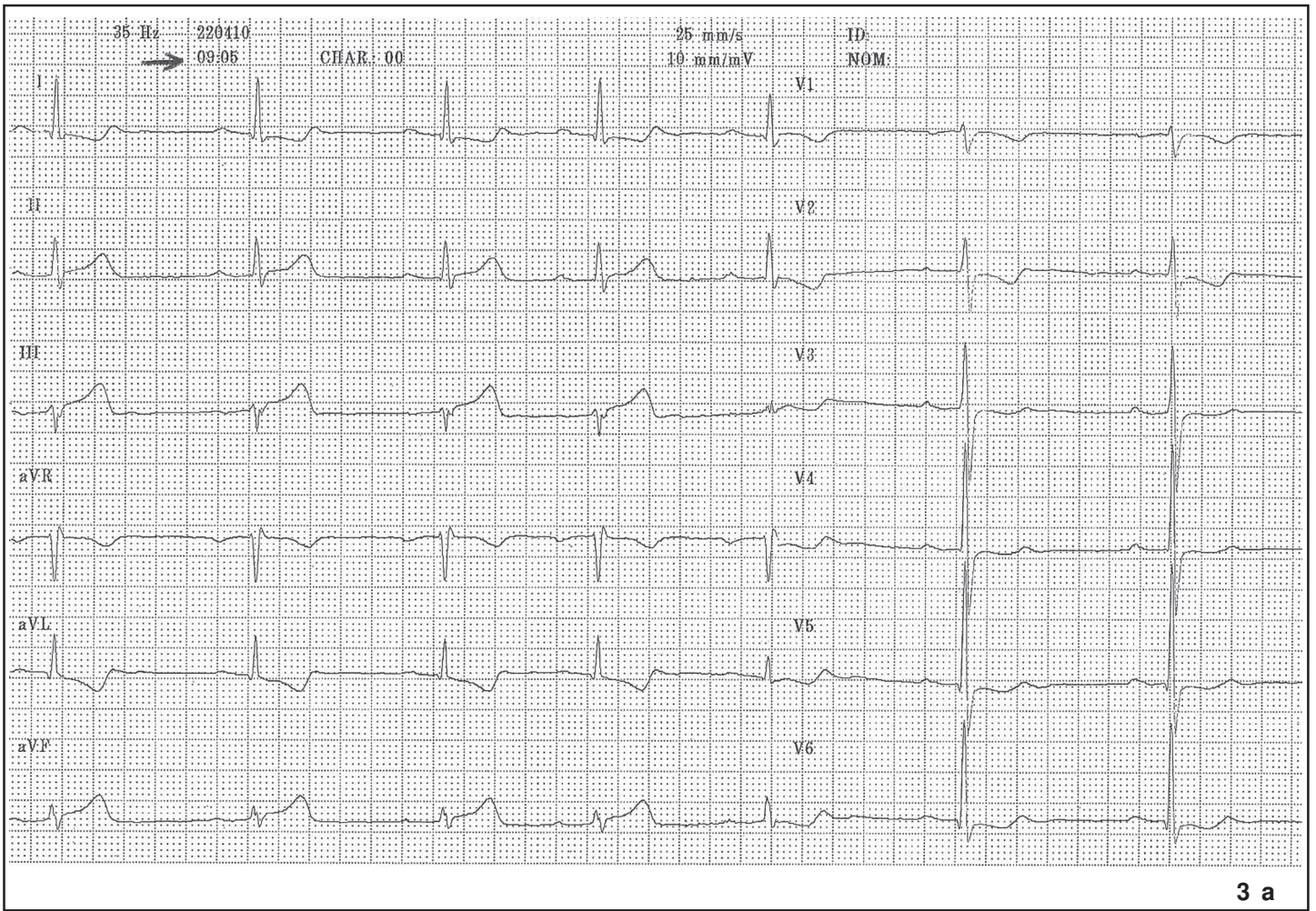


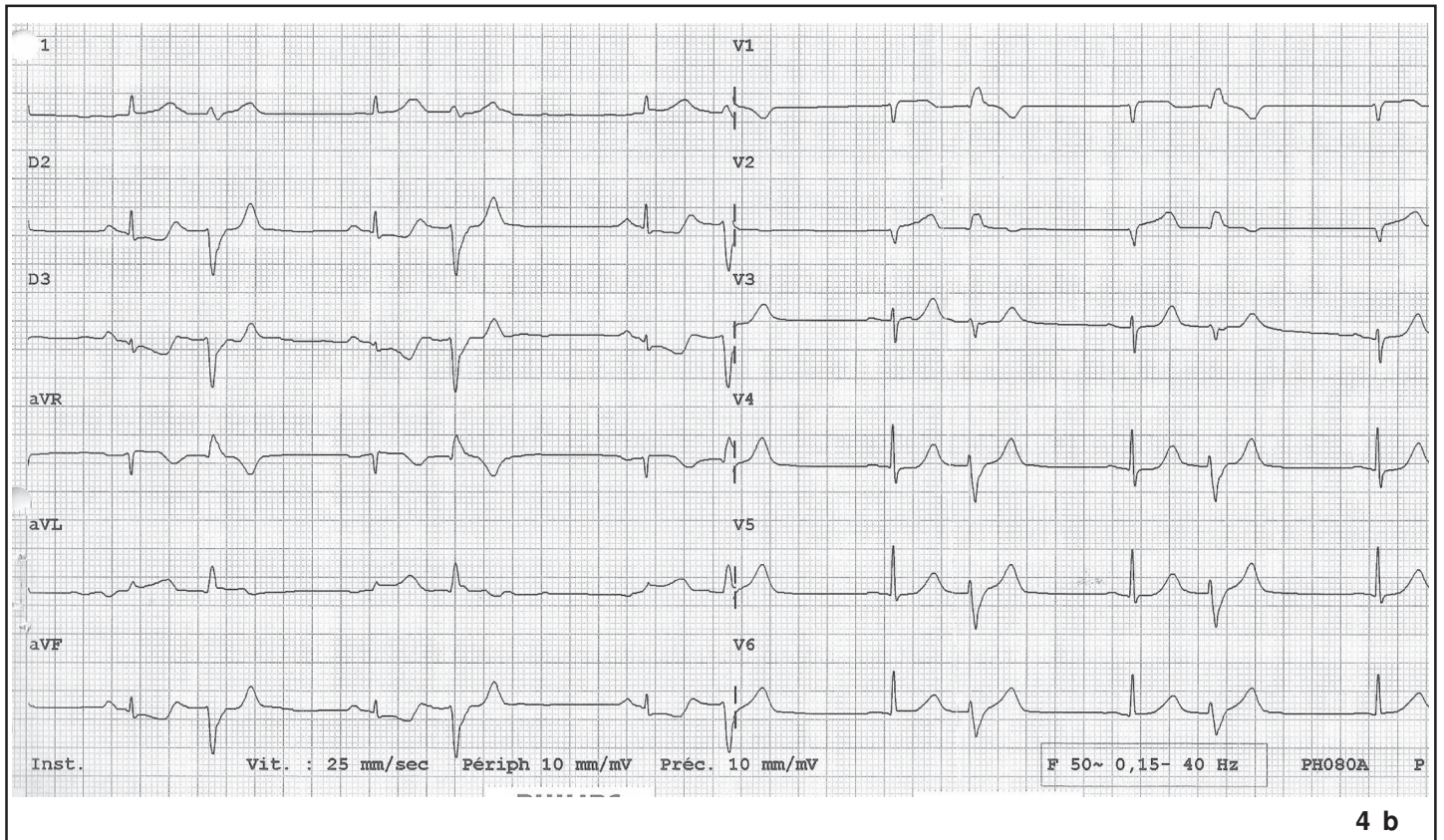
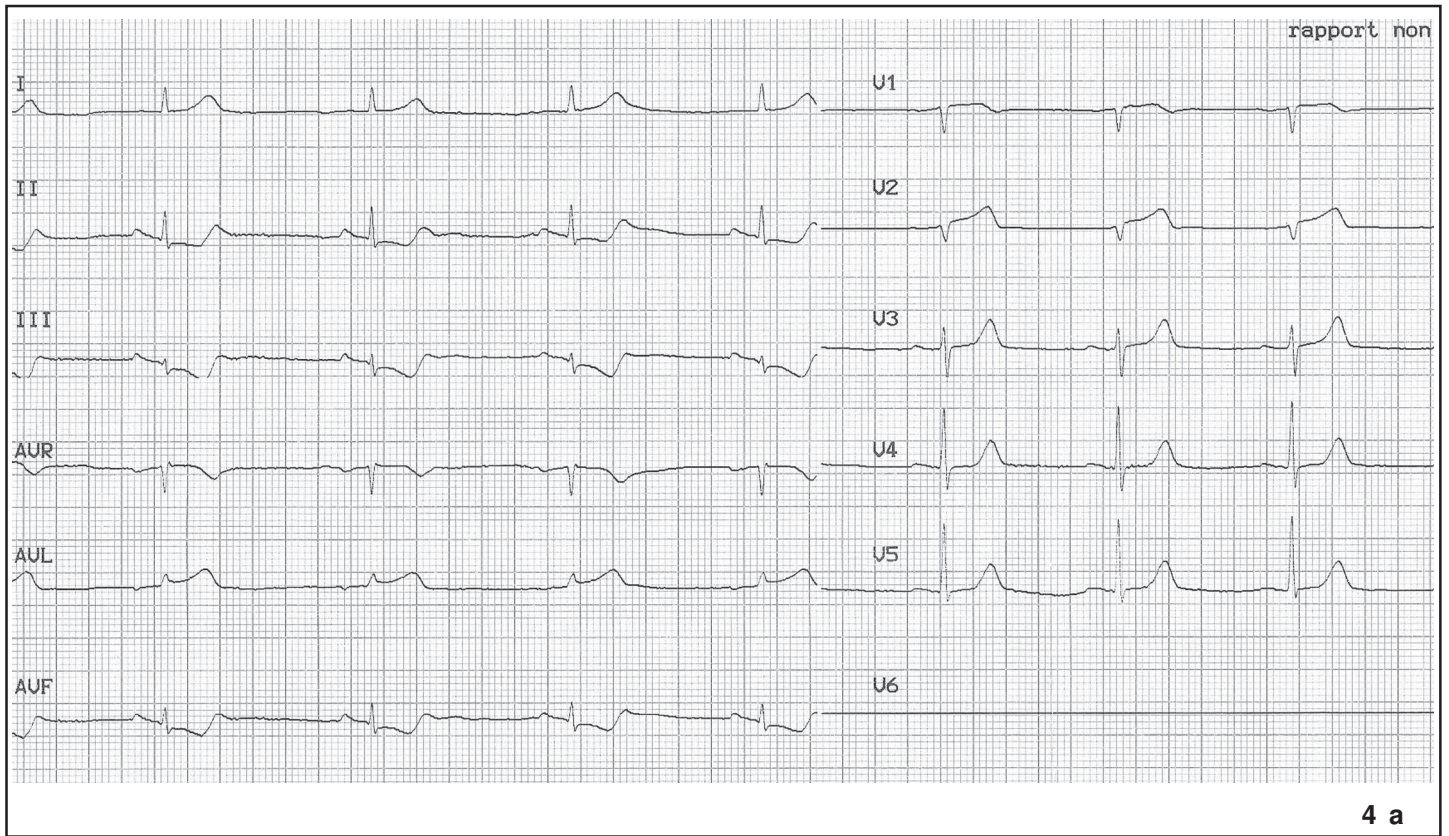
1 a

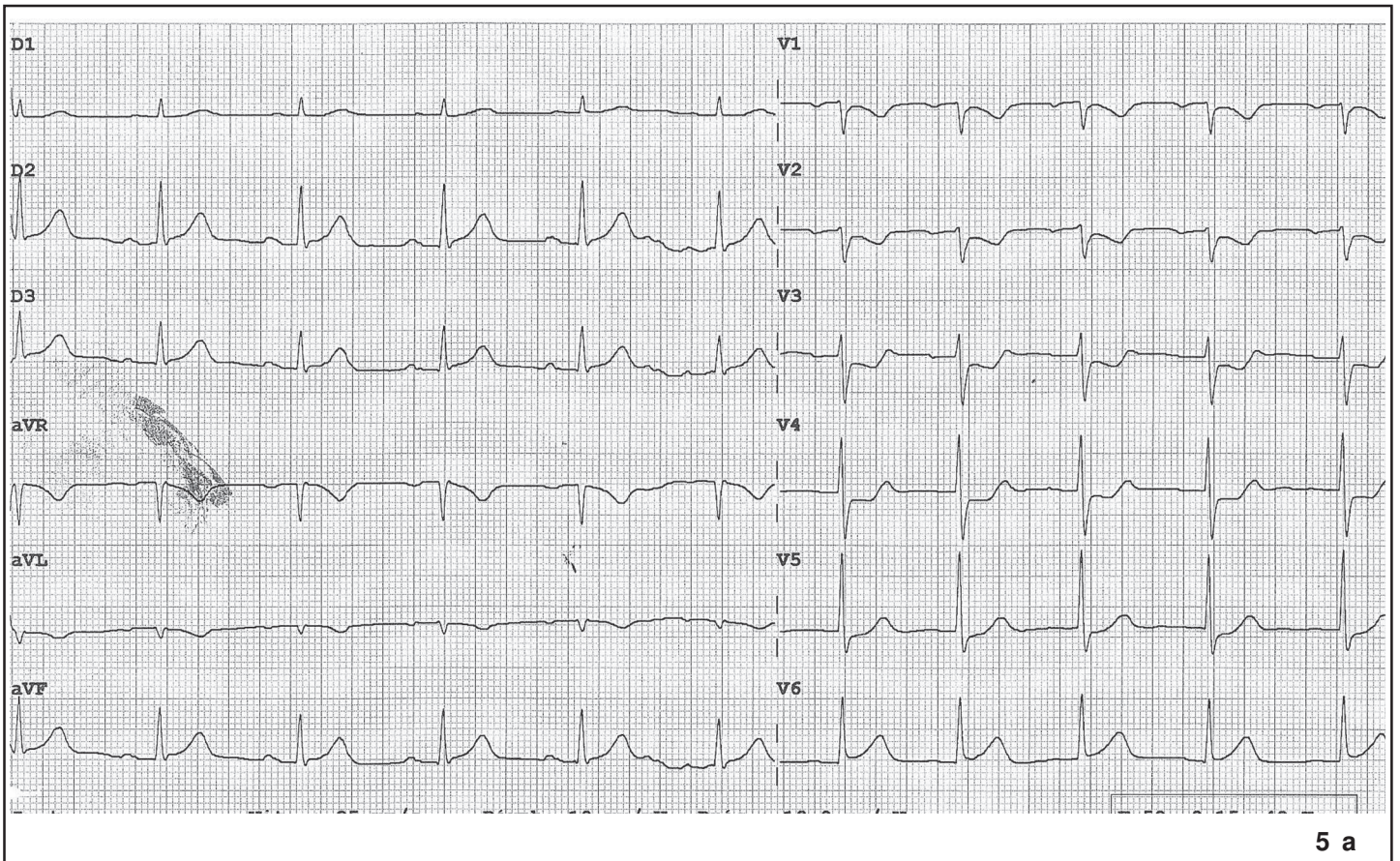


1 b

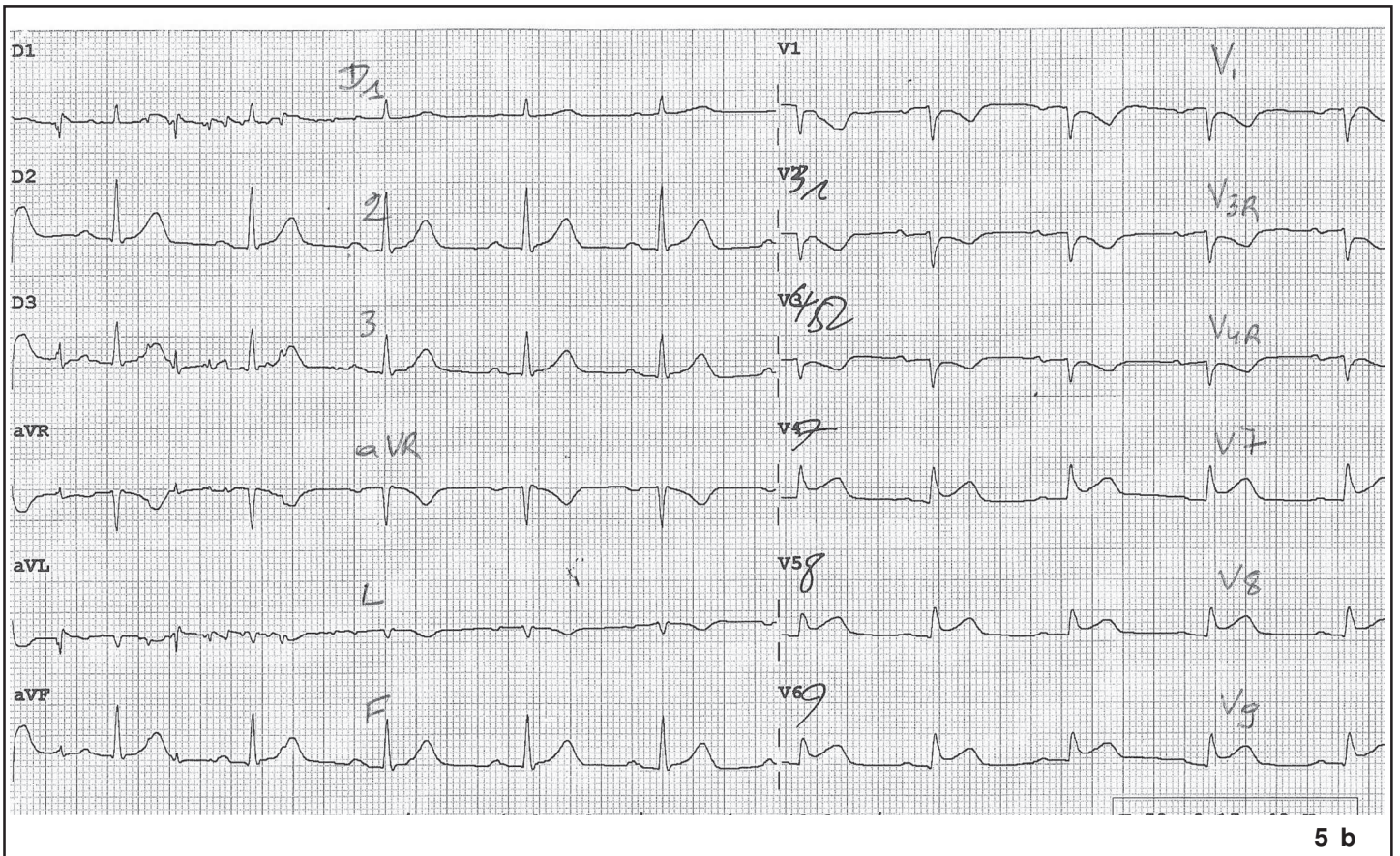




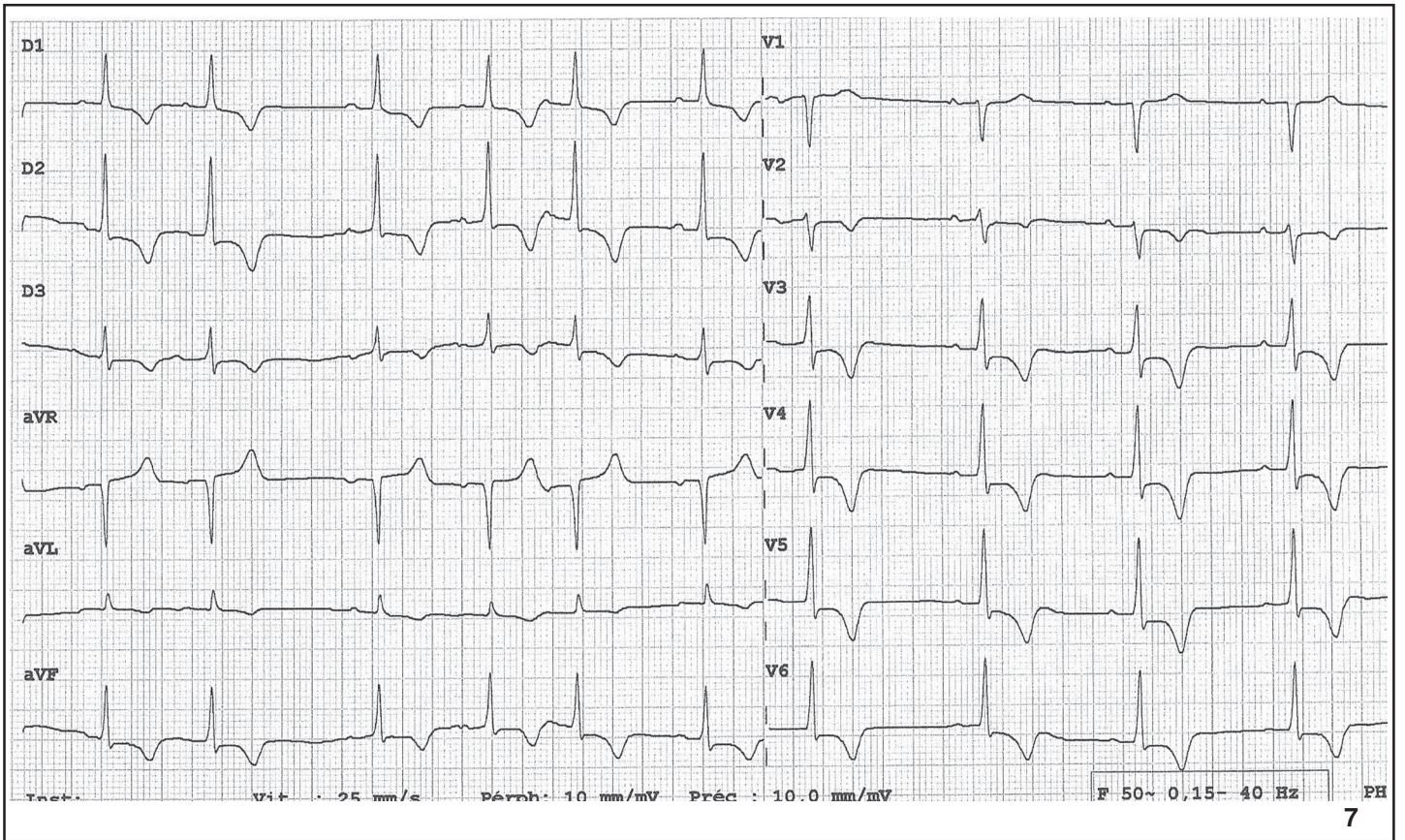
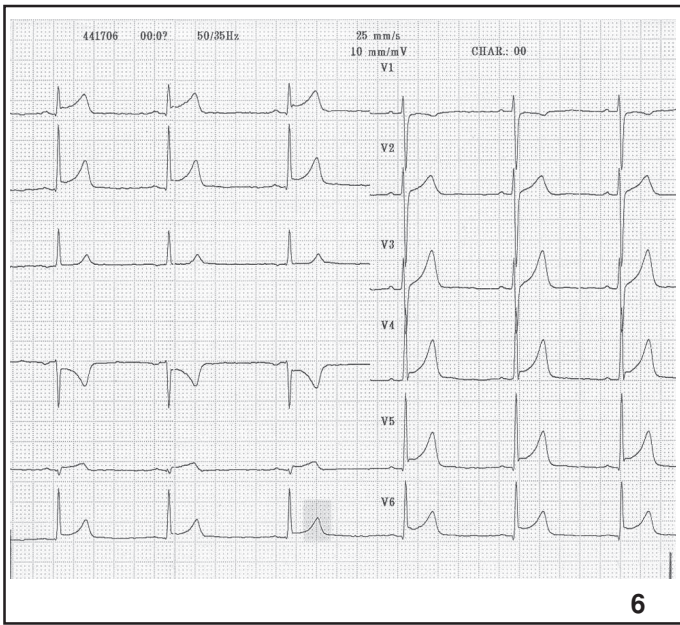




5 a



5 b





8



9

